

## Features Overview

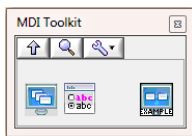
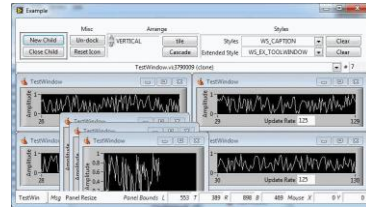
- Multiple windowed forms (Panels).
- Mouse and panel event propagation
- Window styling.
- Window arrangement (tile, cascade)
- Flash window title bars.
- Window docking and undocking.
- Window management.
- Window List management.
- Simple API.

## Platforms

- Windows® 7 or later

## LabVIEW™ Versions

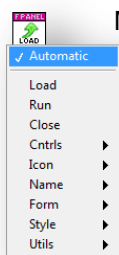
- Windows® - 2013 or later



The LVS Tools MDI Toolkit for LabVIEW helps developers create multiple document interface (MDI) applications quickly and easily on Windows® platforms.

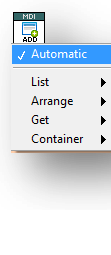
The toolkit encapsulates the Windows® API functions to create child windows and adds powerful management functions such as tile, cascade, dock/undock, and flash child panels' title bars. Mouse and front panel events are simultaneously propagated from the child panels so that the MDI application is fully aware of user activities.

Two simple Vis with multiple functions create an easy to use API for managing and interacting with front panel windows and lists of windows.



### Manage Front Panels.

- Load
- Run
- Close
- Get/Set Control Values
- Set/Clear Icon
- Get Name
- Set Position
- Set Style
- Flash Title bar
- Dock/Undock
- Animate



### Manage Lists of Panels.

- Add
- Remove
- Count
- Names
- Tile
- Cascade
- Docking
- Get Panel
- Create Container
- Get Container
- Get/Set Container Position

An example demonstrates all the main features of the API for a rapid learning curve.

